

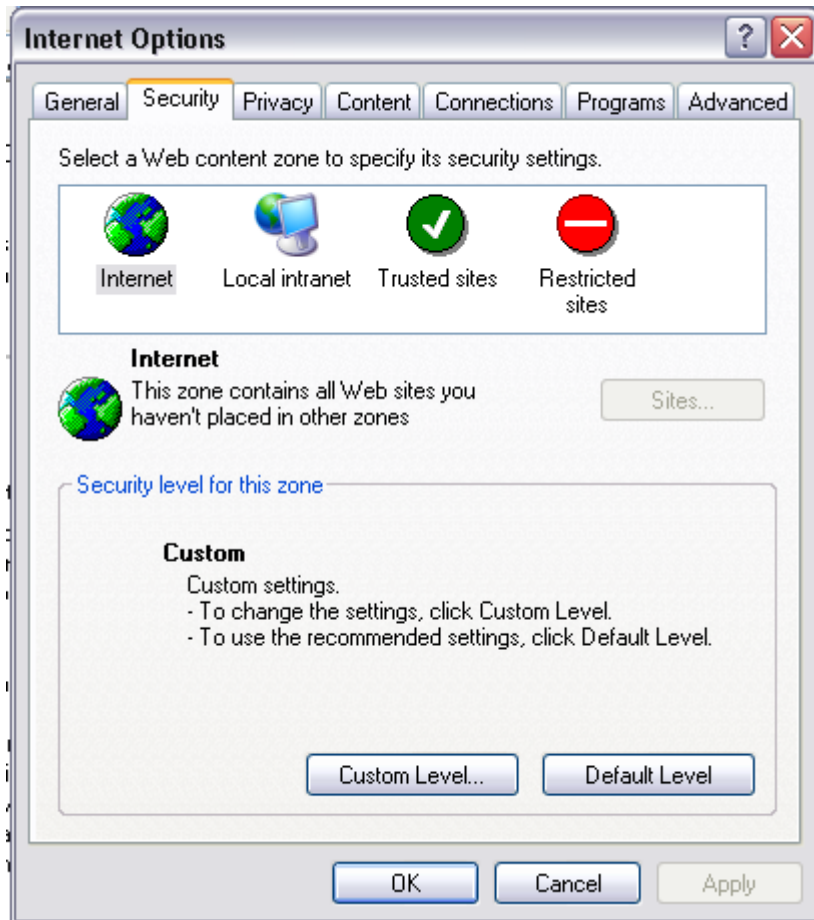
Setting Up A Computer To Run Atlas LabWorks Reporting Only

1. Open Internet Explorer and go to help and then “About Internet Explorer” you should get a pop-up like picture 1.



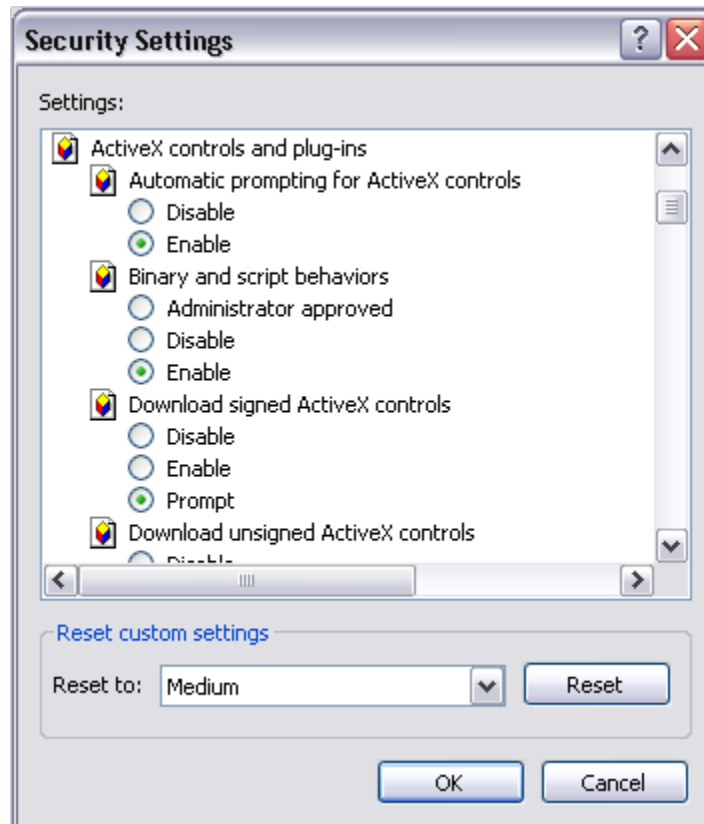
Picture 1

2. Check the version on your pop-up with what is on picture 1 if the version is lower than 6 you will need to continue with the next step. If the version is 6 or higher skip to step 5.
3. Go to tools then windows update.
4. Follow the onscreen instructions to update the computer to the most recent version of internet explorer.
5. Open Internet Explorer and go to tools then internet options...
6. A window will open. Click on the Security tab. The window should look like picture 2.



Picture 2

7. Click on the custom level button at the bottom of the screen this will open the custom security settings window.
8. Scroll through the custom settings window until you reach the section containing the Active X controls and plug-ins. Your pop-up window should look like picture 3.

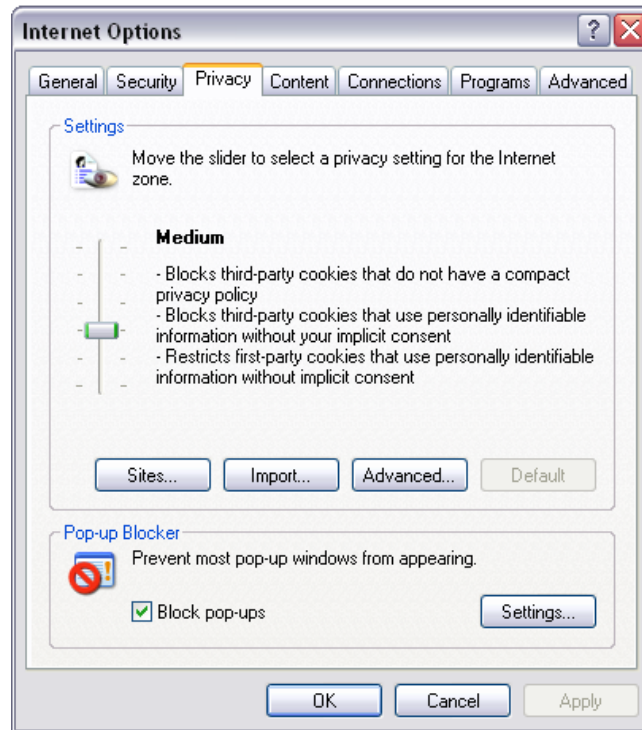


Picture 3

9. Make sure that each setting under the ActiveX controls and plug-ins is set to either enable or prompt.

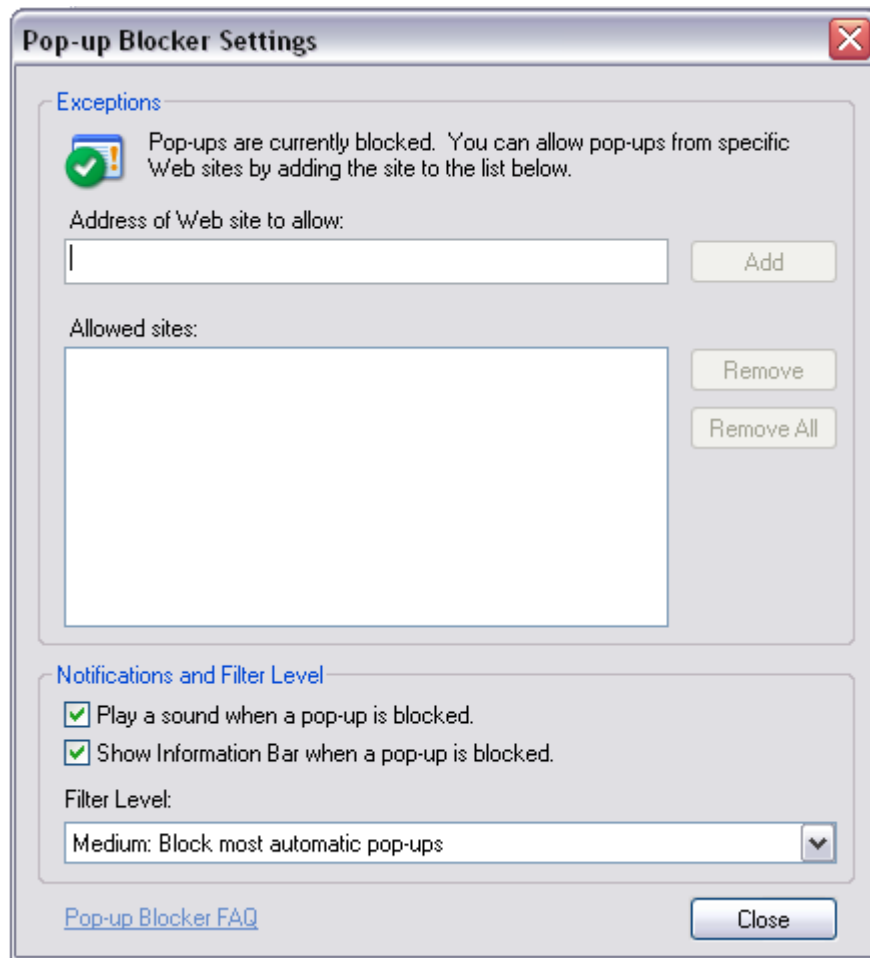
Picture 4

10. Now click on the Privacy tab at the top of the Internet Options pop-up window your window should now look like picture 5.



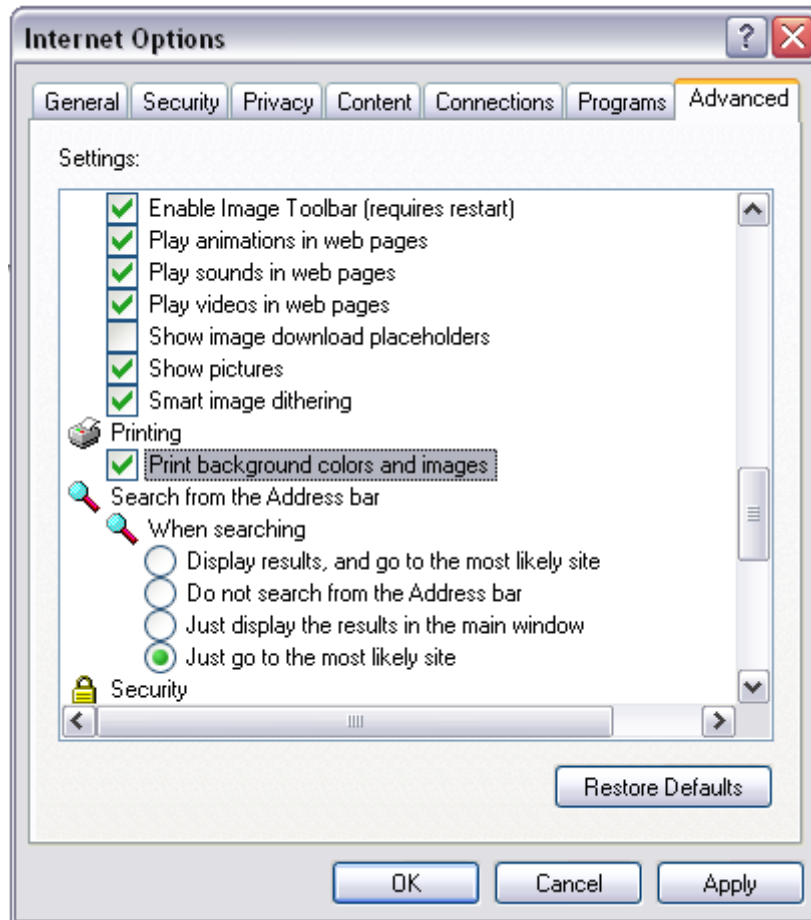
Picture 5

11. Click on Settings... at the bottom of the window this will open up the Pop-up Blocker Settings window picture 6.



Picture 6

12. Type in <https://ghc.elaborders.com> in the “Address of Web site to allow:” field and click on the Add button, do the same with www.ghciconnect.com. Close the window. Note if you are using other third party pop-up blocking software you will need to either disable the pop-up blocking feature or add <https://ghc.elaborders.com> and www.ghciconnect.com as allowed sites.
13. Now click on the advanced tab in the Internet Options pop-up window scroll down until you get to the Printing section like picture 7.



Picture 7

14. Make sure the Print background colors and images box is checked. Click Apply then OK
15. Now close Internet Explorer and reopen it.
16. Enter www.ghciconnect.com in the Address bar and press enter. The screen will flash and a separate window will open with the Atlas LabWorks login screen.
17. Minimize all other open programs until the only open window is the login screen. Now click and hold on the internet explorer symbol at the top of the window and drag it to the desktop.
18. This will create a link called Atlas LabWorks – Login you can now right click on the link and select rename to name it whatever you wish. Note it is important that internet explorer is your default web browser if it is not the link you just created will not work. If this is the case you will need to go to tools-internet options... click on the Programs tab and then click on the "Internet Explorer should check to see whether it is the default browser" button at the bottom of the screen. Click Apply and OK then close and open internet explorer click on Yes to set internet explorer as the default browser repeat steps 14 and 15.